

ACCESSORIES

- ✓ ELEKTRICAL LOCKING MECHANISMS
- ✓ DISK DRIVE MECHANISM TYPE T/T
- ✓ D-Z DRIVE MECHANISM
- ✓ OPERATING MECHANISMS AT THE FRAME BASE OF THE SWITCH

ELECTRICAL LOCKING MECHANISMS

24, 48, 110 V DC and 220 V AC

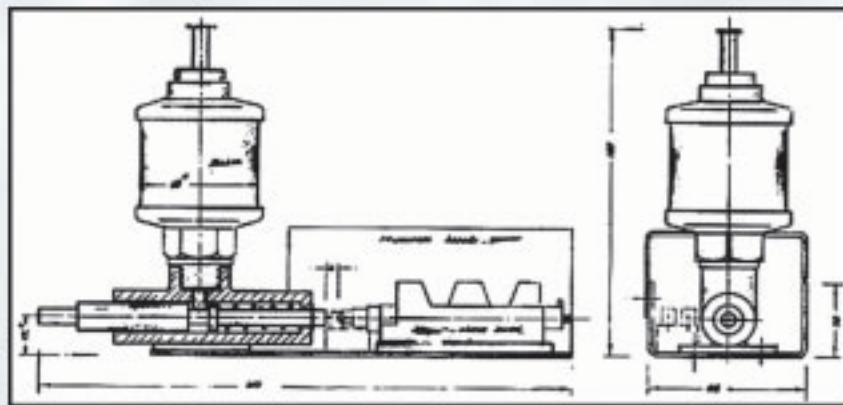
A system to be used with safety wherever locking is necessary. The system could be operated manually by opening the cap if necessary.



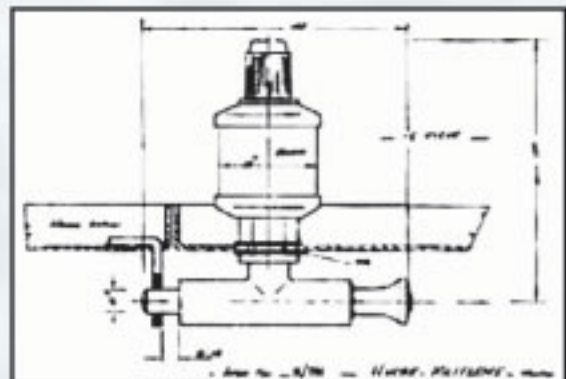
Type K/Si



Type K/G

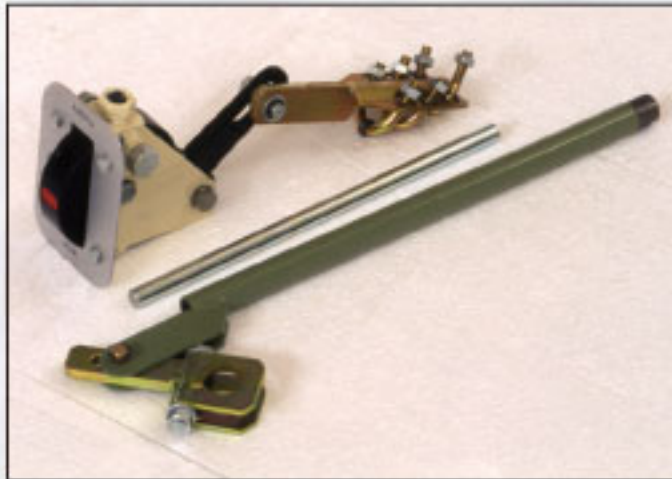


Type K/TH Cell door lock



OPERATING MECHANISM (INDOOR)

DISK DRIVE MECHANISM TYPE T/T



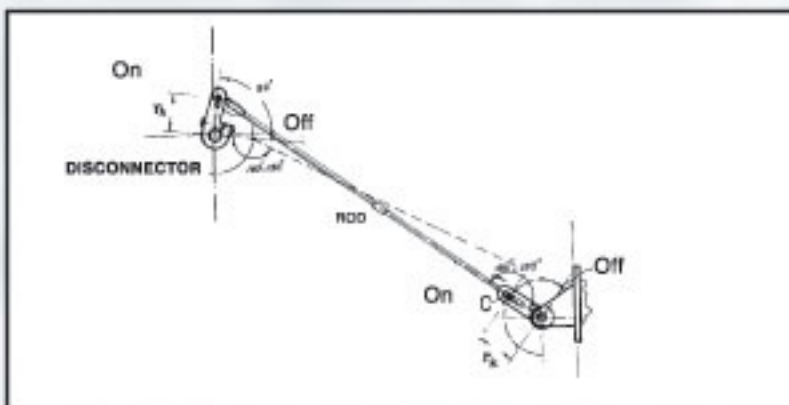
- Suitable for indoor M.V. switchgear panels
- Maximum torque appr.20 kg.m
- Detachable lever
- Toothed operating crank-adjustable 9°
- Appr. weight, excluding rod, 6 kg

OPTIONAL:

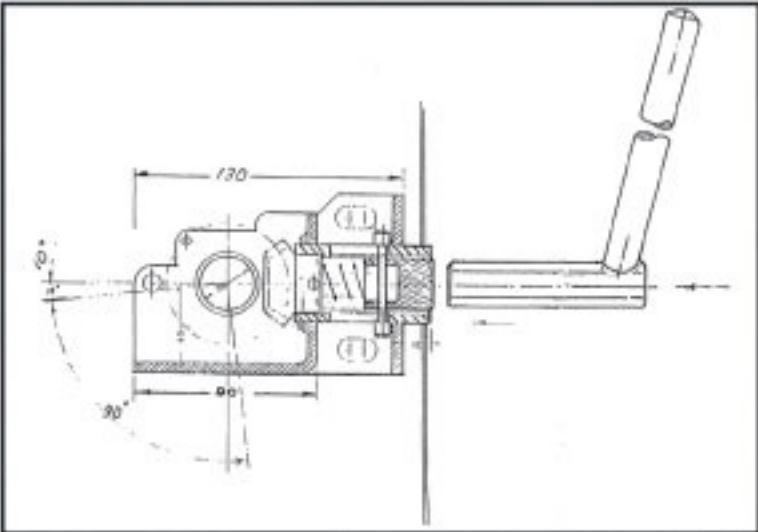
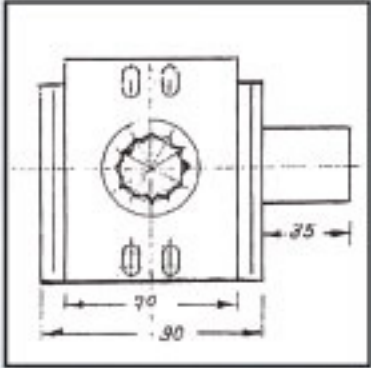
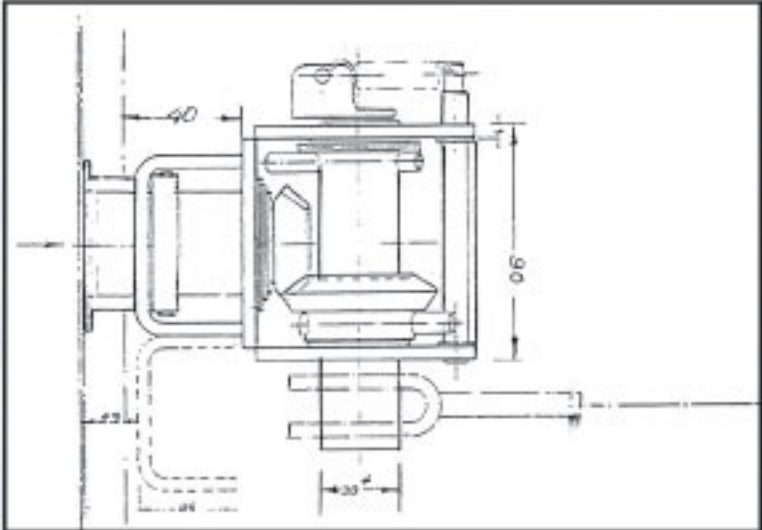
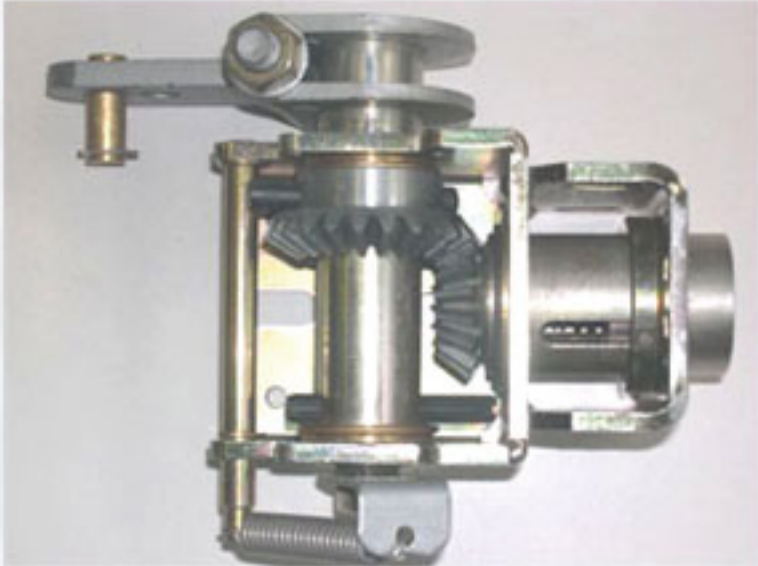
- Can be with direct or indirect locking system.
- YA auxiliary switch can be added.

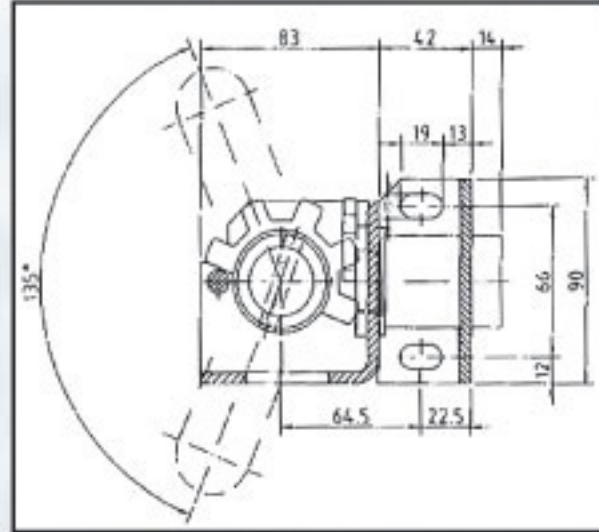
ARRANGEMENT

To obtain most convenient solution at the "ON" position, the rod and the bar "C" should be on the same line. However, at the "OFF" position there should be an angle of appr. 150° (before reaching dead point) between the rod and the coupling-bar "D".



D-Z DRIVE MECHANISM





For operating disconnector and load-break in switch gears. The maximum torque of the D-Z drives are 180 Nm.

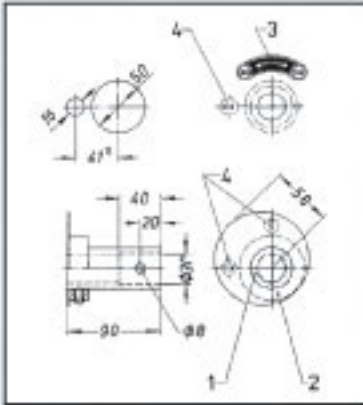
OPERATING MECHANISMS AT THE FRAME BASE OF THE SWITCH

1- On the switch panel:

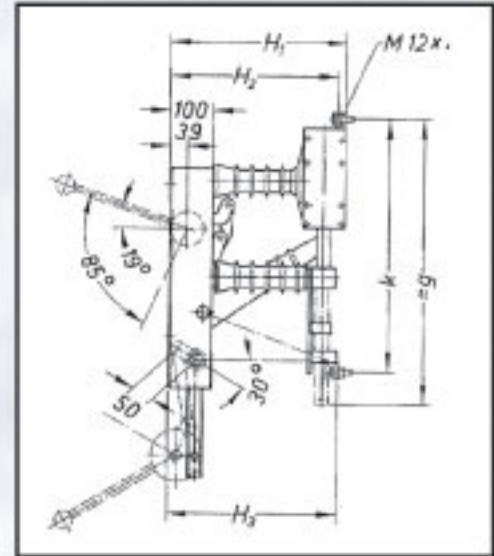
Switch mounted at the reverse side of the switch panel.

2- By mounting on the side of the switch:

direct command through the disconnector pin is possible.



- 1 4 or 6 side
- 2 Fixing plate
- 3 Sticker showing command direction
- 4 ON-OFF sticker



INTER-TEKNİK
ELEKTRİK TURİZM TİCARET ve SAN. LTD. ŞTİ.

HEAD OFFICE / MERKEZ OFİS

Râhın Cad. Fatih İş Hanı 131/10 Karaköy - İSTANBUL - TR Phone: [0212] 244 32 49 - 249 84 58 Fax: [0212] 251 61 45

FACTORY / FABRİKA

Y.Dudullu/Ümraniye/ İSTANBUL - TR Phone / Fax : [0216] 313 55 60

www.inter-teknik.com



MAY 2006